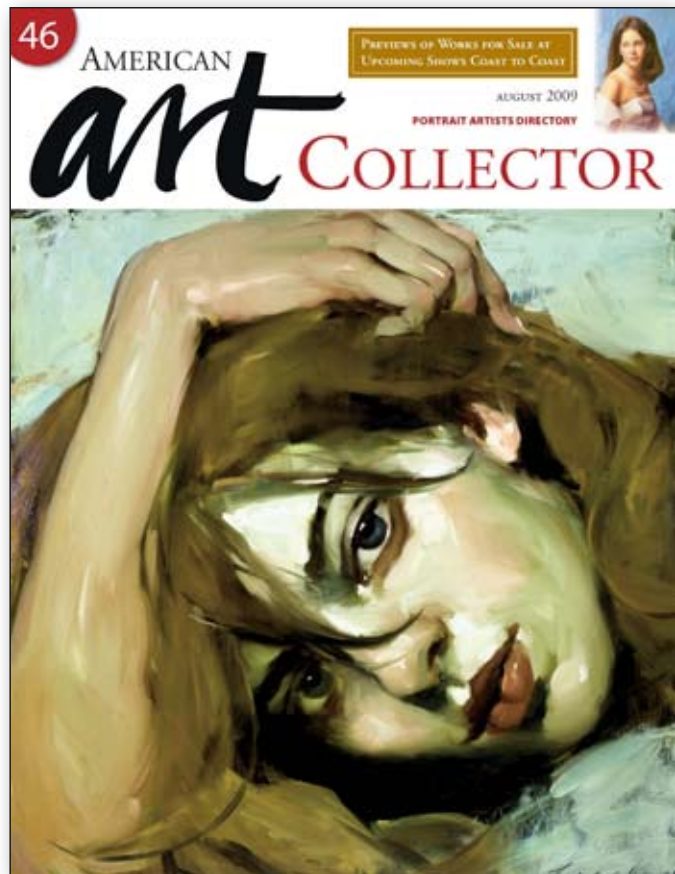


As seen in the  
August 2009 issue of

 AMERICAN  
*art* COLLECTOR



## UPCOMING SHOW

*Up to 200 works on show*  
August 7-September 30, 2009  
Skotia Gallery  
150 W. Marcy Street, Suite 103  
Santa Fe, NM 87501  
(505) 820-7787

• SHOW LOCATION SANTA FE, NM

# RAY TURNER

## General populace

Ray Turner likens his next gallery exhibition to more of an installation than a traditional show of new paintings. By the time the show opens this month, Turner will have painted over 200 portraits—all 12 inches square on glass and wood panels—of the people who he shares his life with, from his son's coaches to his gardener for the past 15 years.

"I've called the show *Population* because it's the notion of this is my community, this is a group of people who are my people," says Turner. "It gives insight into the idea that these are people, individual people, and not just 1 million people like you hear when people are talking about the population of a place. They are each a very specific person with unique and inherent gifts."

While the portraits maintain a strong likeness to the people they depict, Turner is after more of a feeling of these people rather than a literal rendering of them.

"They are more of the poetic statement about the person," says Turner. "They are soulful kinds of paintings in a way, and I discover as I paint them that there is an intimacy that takes place during the process. I'm capturing one moment in time, something that captures the essence of the person."

Turner is also looking at this wide group of portraits as a kind of color study. The backgrounds of each portrait are systematically painted as color swatches first.

"There are 40 different colors and five different values of each," says Turner. "So, 200 panels. It's like when you go to a paint store and you go from gray through the primaries, even the secondaries, and I am after five values in each color so it is that sort of color study. And, they are



THIS PORTRAIT OF TURNER'S FRIEND JOE WAS THE IMPETUS FOR HIS PORTRAIT SERIES.



interchangeable. I can fill one wall with one value or one color and the values shift from the lightest to the middle to the darkest value range.”

Turner hatched the idea when he painted a portrait of an older gentleman named Joe who used to live with him.


“I spent five years doing paintings of him and he died at the age of 96,” says Turner. “He was like a grandfather to me.

Painting heads was my first love. It’s how I learned to paint. And, after Joe, I turned to the people I know and then to baseball players. But I’ve been painting this way since 1985.”

Don’t be surprised if you see some familiar faces in the groups of portraits.

“There are quite a few artists in there,” says Turner. “I painted Kenton Nelson, Richard Bunkhall and Steve Huston.

And, of course, my wife Sally Storch. I also painted my California dealer Tim Yarger and the gallery director Bryson Strauss. I love my wife’s French braids, so hers is the only portrait I’m doing of the back of the head.” ●

For a direct link to the exhibiting gallery go to   
[www.americanartcollector.com](http://www.americanartcollector.com)